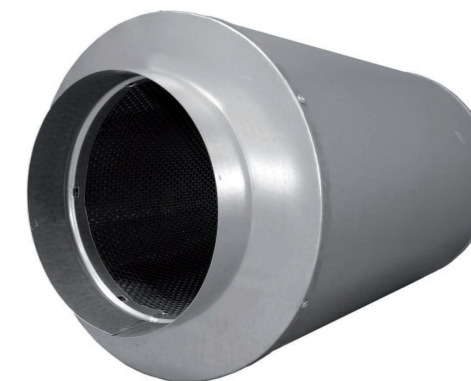




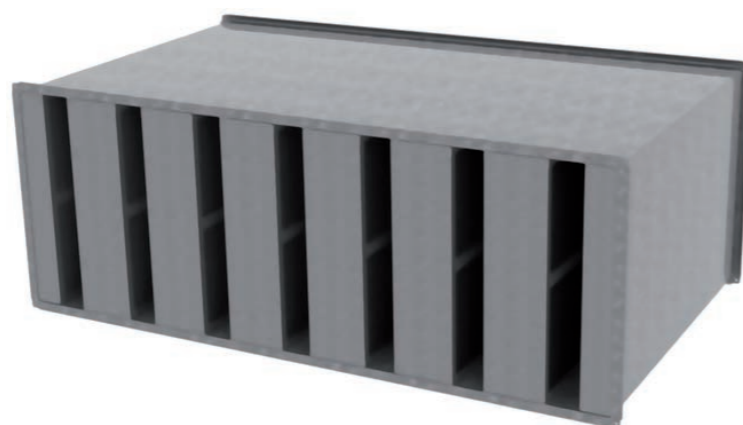
Circular silencers

Circular silencers KOOLAIR brand, model **ASK-1** (without core) or **ASK-2** (with core). The acoustic material comprises glass fibre density suitable for heat resistant and protected against erosion by perforated sheet galvanized plate. For the construction of the central core (ASK-2) are used the same materials. The maximum recommended temperature is 135° C.



Rectangular silencers

Rectangular acoustic silencers, Koolair brand, model **PAK, PBK, PAKM** and **PBKM**. Box of galvanized sheet steel. Designed to be installed in areas where the air distribution needs a low noise level, for the attenuation up to 50 dB (A) according to the selected model. The acoustic material is glass fibre heat-resistant and protected against erosion by the air layer of protection against fire: PAK. If in addition it incorporates perforated plate: PBK (suitable for high velocities). With further coating of a polyester film: PAKM and PBKM. The maximum recommended temperature is 135° C.



Acoustic external Louvre

External acoustic louvre, Koolair brand, model **250-TAA** (single thickness) and **250-TAAD** (double thickness). Galvanized steel plate. Are used by introduction of fresh air or exhaust air discharge with attenuation of the initial noise level up to 20 dB (A) in the band of 250 Hz. The acoustic material is glass fibre heat-resistant and protected against erosion of the air by a perforated plate on the other side of the blades. The maximum recommended temperature is 135° C. Can incorporate bird-mesh (standard finish) or anti-insect mesh (on request).



Note: For more information refer to catalogue and/or Technical Department.

Note: For more information refer to catalogue and/or Technical Department.

ASK-1

Selection table

Dimension ØA	Q _{min} (m³/h)	Q _{max} (m³/h)	ΔP _{min} (Pa)	ΔP _{max} (Pa)
80	69	206	7	67
100	109	326	6	54
125	171	513	5	43
160	282	847	4	34
180	358	1075	3	30
200	443	1330	3	28
250	696	2087	2	22
315	1108	3324	2	18
355	1409	4228	2	17
400	1792	5375	2	15
450	2270	6810	2	14
500	2805	8415	1	12
560	3521	10564	1	11
630	4460	13381	1	10
710	5669	17007	1	9
800	7202	21606	1	8
900	9120	27361	1	7
1000	11265	33794	1	7



LEGEND

Q_{min} (m³/h): Air flow for a duct velocity of 4 m/s
 Q_{max} (m³/h): Air flow for a duct velocity of 12 m/s
 ΔP (Pa): Total pressure loss.

Attenuation. 500mm length

Dimension	f _m in Hz							
	63	125	250	500	1k	2k	4k	8k
80	5	9	12	14	28	44	35	24
100	4	7	10	13	27	43	34	23
125	4	7	10	13	27	42	22	11
160	4	7	9	12	25	35	18	10
180	4	7	9	11	24	30	16	10
200	3	5	6	11	24	24	15	9
250	3	5	6	9	22	19	13	9
315	2	4	5	8	15	15	9	8
355	2	4	5	8	14	14	9	8
400	2	4	5	7	13	13	8	7
450	2	4	5	7	11	12	7	7
500	2	3	4	7	8	7	6	5

Unit mm
 f_m (Hz): Octave band frequency.

Attenuation. 1000mm length

Dimension	f _m in Hz							
	63	125	250	500	1k	2k	4k	8k
80	6	13	19	27	47	50	50	36
100	5	11	17	26	46	50	50	35
125	5	10	15	24	44	50	39	21
160	5	9	13	21	41	48	28	17
180	5	9	13	20	40	43	26	17
200	4	7	11	18	39	33	22	14
250	4	6	10	15	36	26	18	14
315	3	6	8	16	30	21	13	12
355	3	5	7	14	27	20	12	11
400	3	5	6	14	27	19	11	11
450	3	5	5	14	18	19	11	11
500	2	5	5	12	17	13	10	8
560	2	5	5	12	17	12	10	7
630	1	4	5	11	16	11	8	5

Unit mm
 f_m (Hz): Octave band frequency.

PAK

Selection table

Dimension B x H	Q (m³/h)	V _f (m/s)	ΔP (Pa)
400 x 200	1200	4.2	18
400 x 300	1600	3.7	15
500 x 300	2200	4.1	18
500 x 400	2500	3.5	13
600 x 300	3000	4.6	23
600 x 400	4000	4.6	23
600 x 600	5000	3.9	16
800 x 500	6000	4.2	18
800 x 600	7000	4.1	17
900 x 600	8000	4.1	18
900 x 900	10000	3.4	12
1200 x 600	12000	4.6	23
1200 x 1200	18000	3.5	13
1500 x 1200	22500	3.5	13
1800 x 1500	25000	2.6	7
1800 x 1800	30000	2.6	7
2100 x 1500	40000	3.5	13
2100 x 1800	45000	3.3	12

LEGEND

Q (m³/h): Air flow.
 ΔP (Pa): Total pressure loss (L: 1000 mm).
 V_f (m/s): Air velocity based on BxH section.

Other models

PAK-H. Rectangular silencer for fancoil installation.



Attenuation. 600mm length

P	f _m in Hz							
	63	125	250	500	1k	2k	4k	8k
50	6	12	21	33	35	40	25	21
75	4	9	16	26	31	37	19	16
100	4	8	16	19	27	30	16	14
125	3	7	12	17	24	23	14	12
150	3	7	10	15	19	21	12	11
175	2	6	10	15	17	19	12	9
200	2	4	9	12	15	15	11	7

Attenuation. 1200mm length

P	f _m in Hz							
	63	125	250	500	1k	2k	4k	8k
50	10	21	41	50	50	50	45	31
75	7	15	31	50	50	50	43	31
100	6	12	28	40	50	50	35	26
125	5	11	25	35	45	47	28	21
150	5	11	20	34	38	40	28	20
175	4	10	18	27	36	37	25	18
200	3	9	17	23	30	31	22	17

Unit mm
 P: Airway in mm.
 f_m (Hz): Octave band frequency.

Note: The sound attenuation data provided corresponds to the use of 200 mm wide interior baffles.